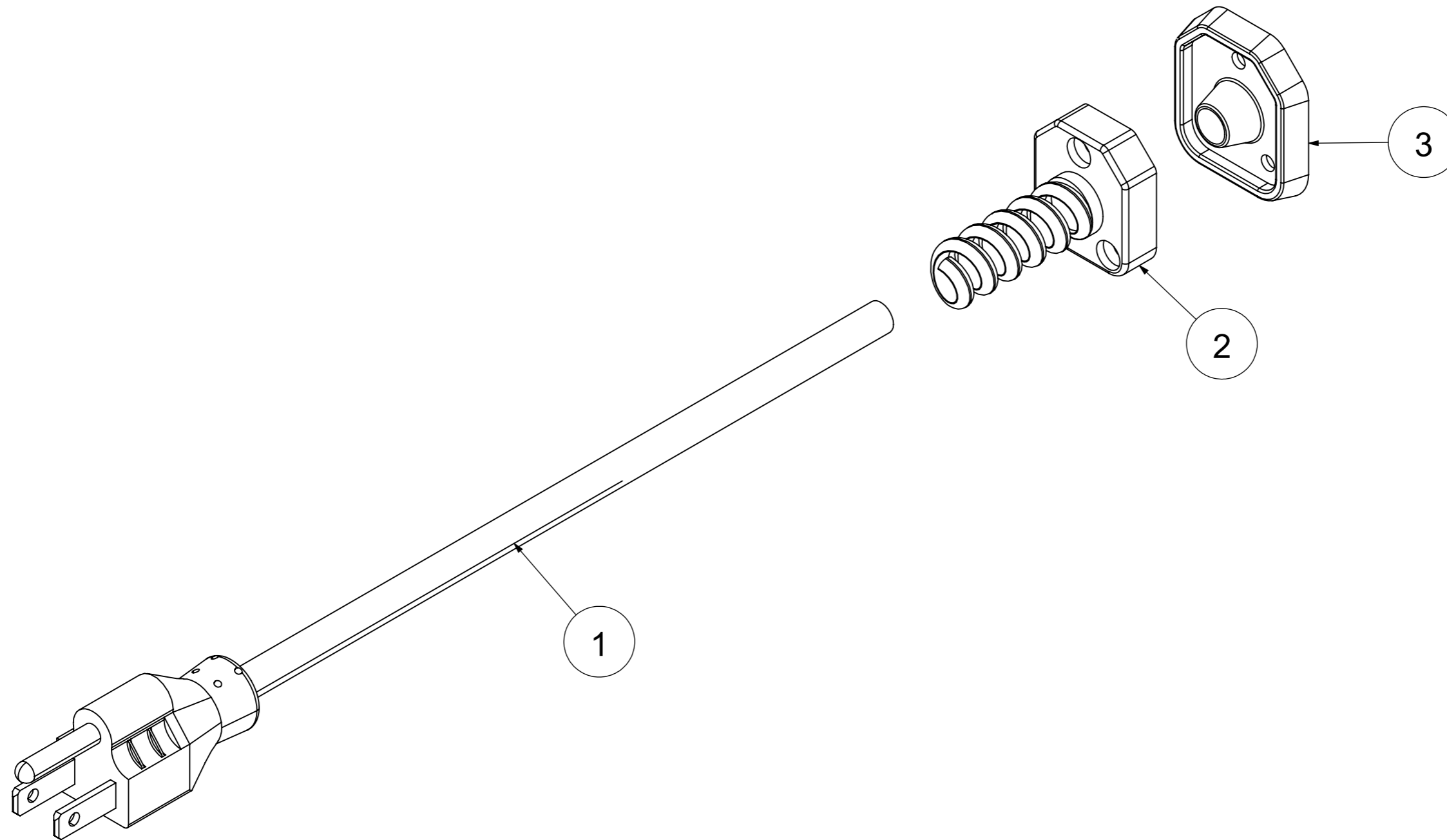
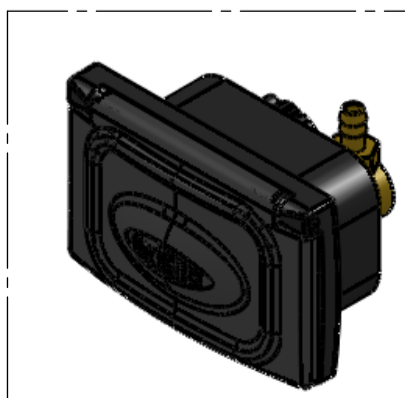
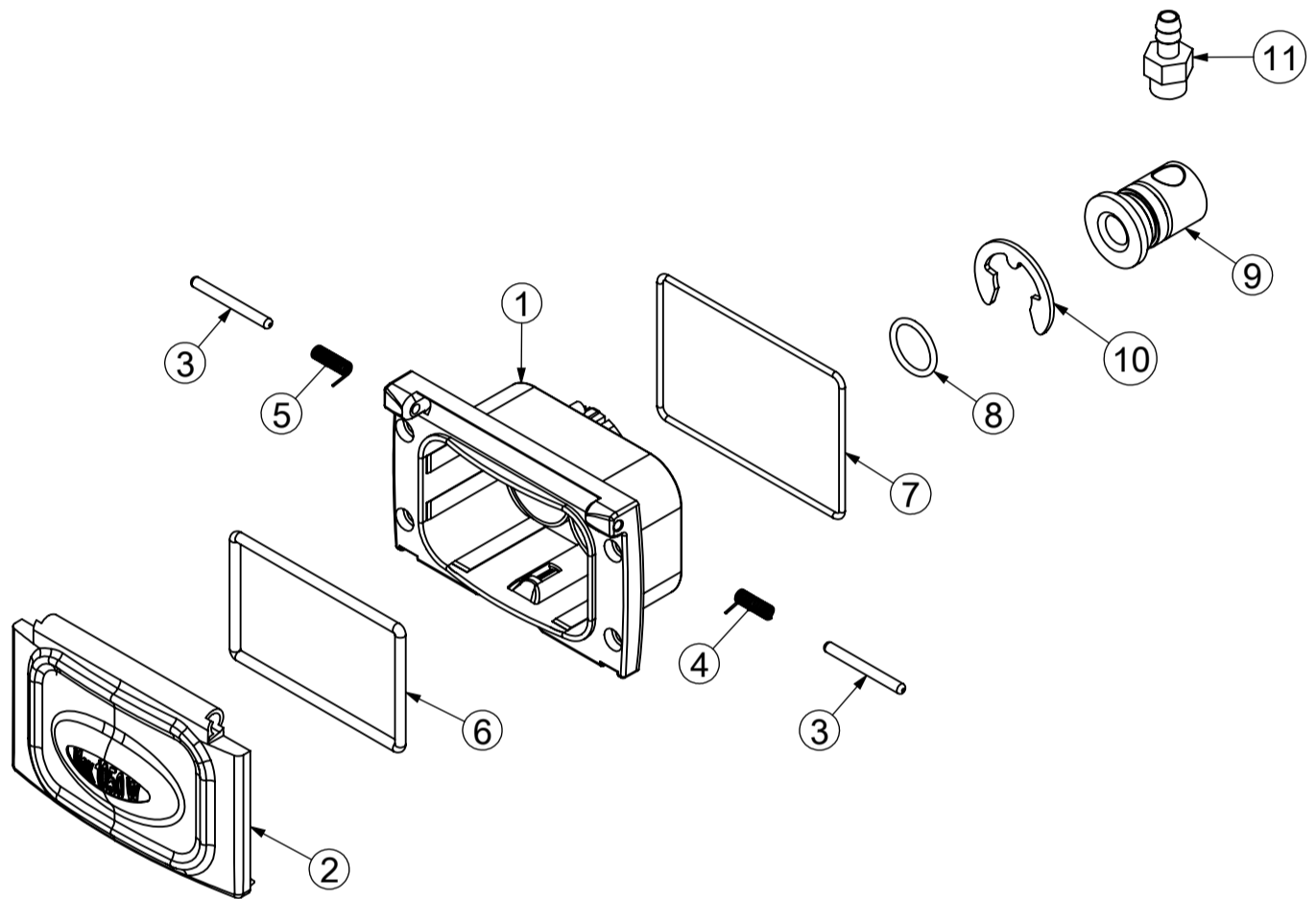


0		PRIMA EMISSIONE		DATE	APPROVED BY
REV.	MODIFY DESCRIPTION			DATE	APPROVED BY
DESCRIPTION				GEN. TOL. UNI EN ISO 22768 mK	
DIAMANT 2L NMBL INOX 0V IMEX 120V				0.5-6	6-30
ENG DESCRIPTION				30-120	120-400
				400-1000	400-1000
				±0.1	±0.2
				±0.3	±0.5
				±0.5	±0.8
				TOLERANCES FOR ANGLES ±1°	
				TOLERANCES FOR DRAFT ANGLES ±10°	
PDM CODE	REV.	CODE	MATERIAL	CER	WEIGHT (g)
P0C2330010	0	AB11090500215800			4955.6
DRAWN BY	DATE	APPROVED BY	DATE	SCALE	
Marco Alessio	11/09/2012			1:5	A2
COLOUR	HEAT TREATMENT	SURFACE TREATMENT	REFERENCES DIE		

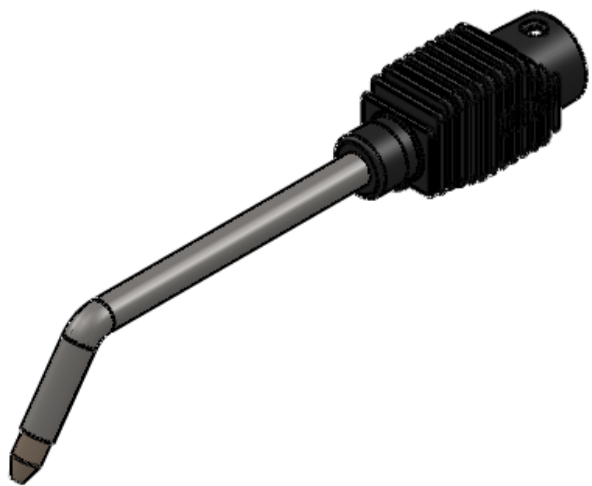
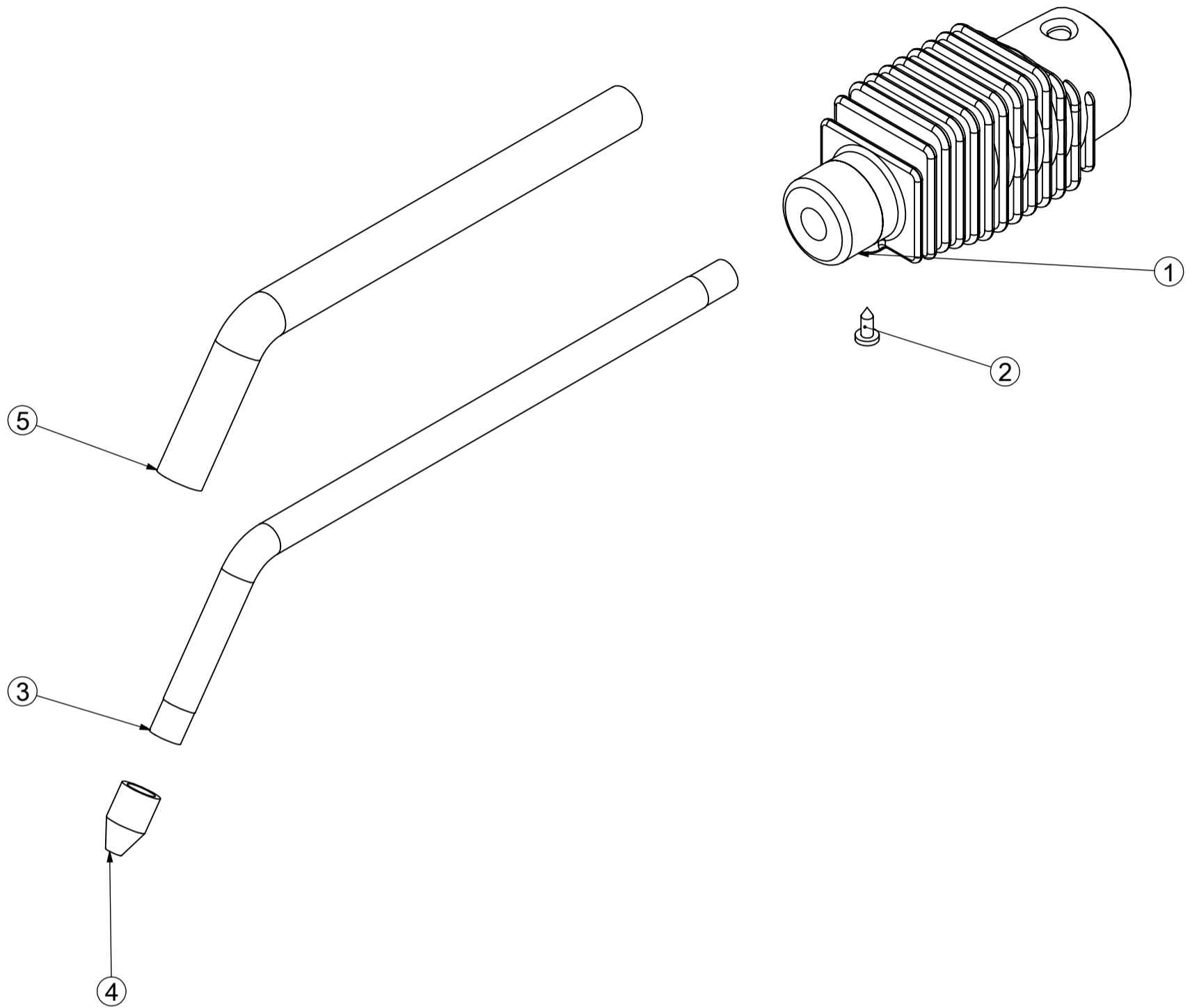


0		PRIMA EMISSIONE			
REV.	MODIFY DESCRIPTION			DATE	APPROVED BY
DESCRIPTION				GEN. TOL. UNI EN ISO 22768 mK	
CAVO AL. AMER 3X14AWGSJTWA105 4,5M+PASS+				0.5-6	6-30
ENG DESCRIPTION				30-120	120-400
				400-1000	
				±0.1	±0.2
				±0.3	±0.5
				±0.8	
				TOLERANCES FOR ANGLES ±1°	
				TOLERANCES FOR DRAFT ANGLES ±10°	
PDM CODE	REV.	CODE	MATERIAL	CER	WEIGHT (g)
A0100004	0	49920109000000			
DRAWN BY	DATE	APPROVED BY	DATE	SCALE	
Marco Cangiano	10/03/2011			1:2	A3
COLOUR	HEAT TREATMENT	SURFACE TREATMENT	REFERENCES DIE		

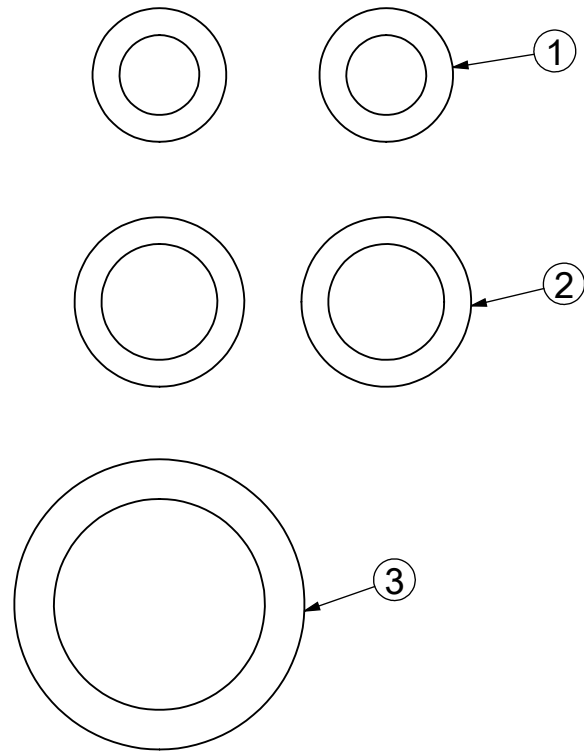


0		PRIMA EMISSIONE			
REV.	MODIFY DESCRIPTION			DATE	APPROVED BY
DESCRIPTION				GEN. TOL. UNI EN ISO 22768 mK	
ASS. CORPO PRESA MBL OT VAP DIAM 6BAR				0.5-6	6-30
ENG DESCRIPTION				30-120	120-400
				400-1000	
				±0.1	±0.2
				±0.3	±0.5
				±0.8	
				TOLERANCES FOR ANGLES ±1°	
				TOLERANCES FOR DRAFT ANGLES ±10°	
PDM CODE	REV.	CODE	MATERIAL	CER	WEIGHT (g)
A0300027	0	20109066560			120,086
DRAWN BY	DATE	APPROVED BY	DATE	SCALE	
Marco Alessio	02/04/2013			1:1	A3
COLOUR	HEAT TREATMENT	SURFACE TREATMENT	REFERENCES DIE		

THIS DRAWING IS PROPERTY OF TPA IMPEX S.P.A. COMPANY. ITS DISCLOSURE, EVEN PARTIAL, WITHOUT WRITTEN AUTHORIZATION, IS PROHIBITED BY LAW.



0		PRIMA EMISSIONE		DATE	APPROVED BY
REV.	MODIFY DESCRIPTION			DATE	APPROVED BY
DESCRIPTION				GEN. TOL. UNI EN ISO 22768 mK	
DRESS-FIT L=250 +SILICONE - MONTATO				0.5-6	6-30
ENG DESCRIPTION				30-120	120-400
detail nozzle l=250 +silicone DD				±0.1	±0.2
				±0.3	±0.5
				±0.8	
				TOLERANCES FOR ANGLES ±1°	
				TOLERANCES FOR DRAFT ANGLES ±10°	
PDM CODE	REV.	CODE	MATERIAL	CER	WEIGHT (g)
A1400053	0	40103142000003			196,44
DRAWN BY	DATE	APPROVED BY	DATE	SCALE	
Andrea Amoretti	02/09/2016			1:1.5	A3
COLOUR	HEAT TREATMENT	SURFACE TREATMENT	REFERENCES DIE		



0		PRIMA EMISSIONE								
REV.	MODIFY DESCRIPTION				DATE	APPROVED BY				
DESCRIPTION						GEN. TOL. UNI EN ISO 22768 mK				
KIT OR RY/VS/RM 3/8"						0.5-6	6-30	30-120	120-400	400-1000
						±0.1	±0.2	±0.3	±0.5	±0.8
ENG DESCRIPTION						TOLERANCES FOR ANGLES ±1° TOLERANCES FOR DRAFT ANGLES ±10°				
PDM CODE	REV.	CODE	MATERIAL		CER	WEIGHT (g)				
A9900422	0	40141003100500				0,92				
DRAWN BY		DATE	APPROVED BY		DATE	SCALE			A4	
Marco Alessio		15/04/2015				2:1				
COLOUR		HEAT TREATMENT		SURFACE TREATMENT		REFERENCES DIE				

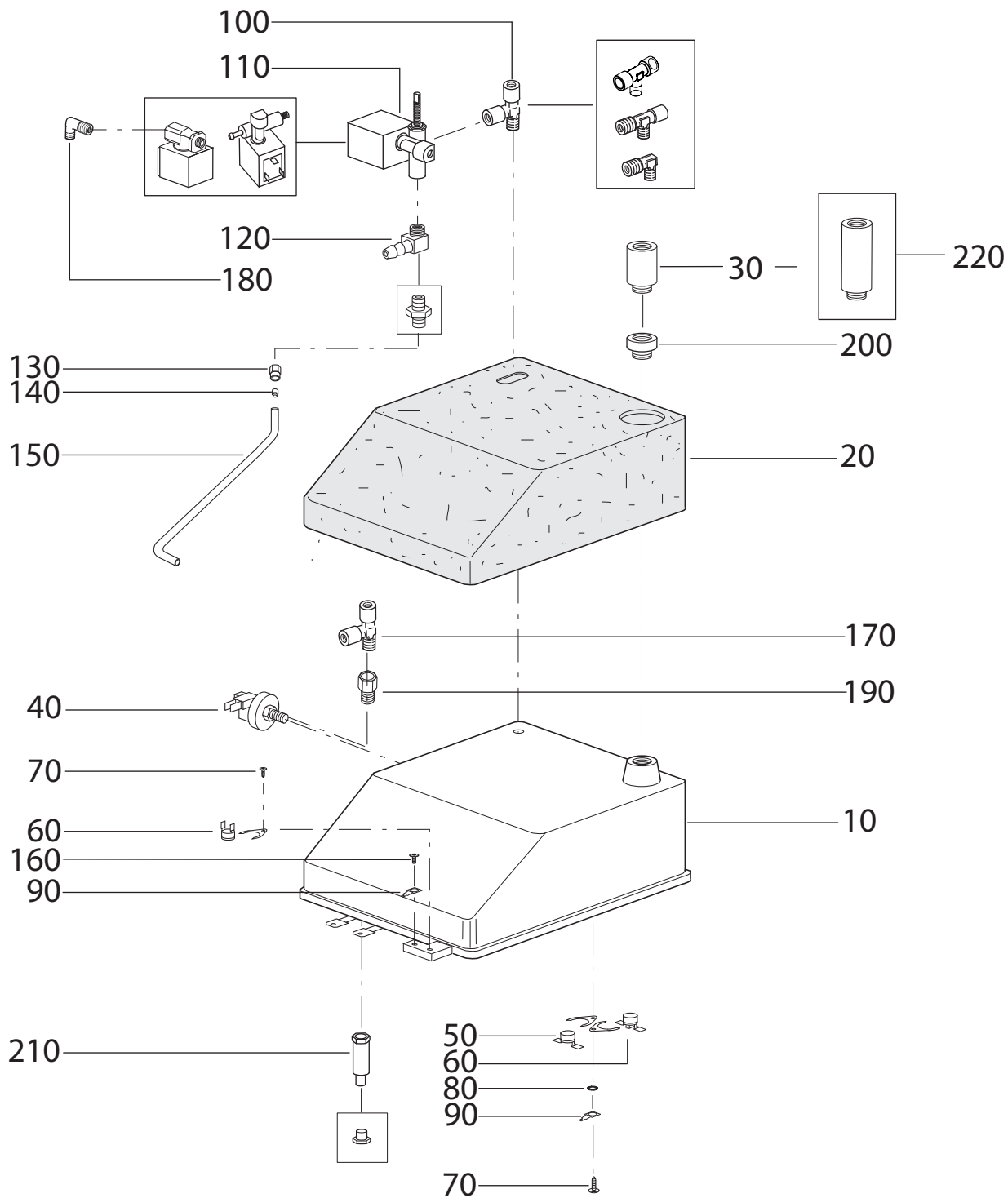


Tavola n°: **G0101**
 Data: **04\07\2007**

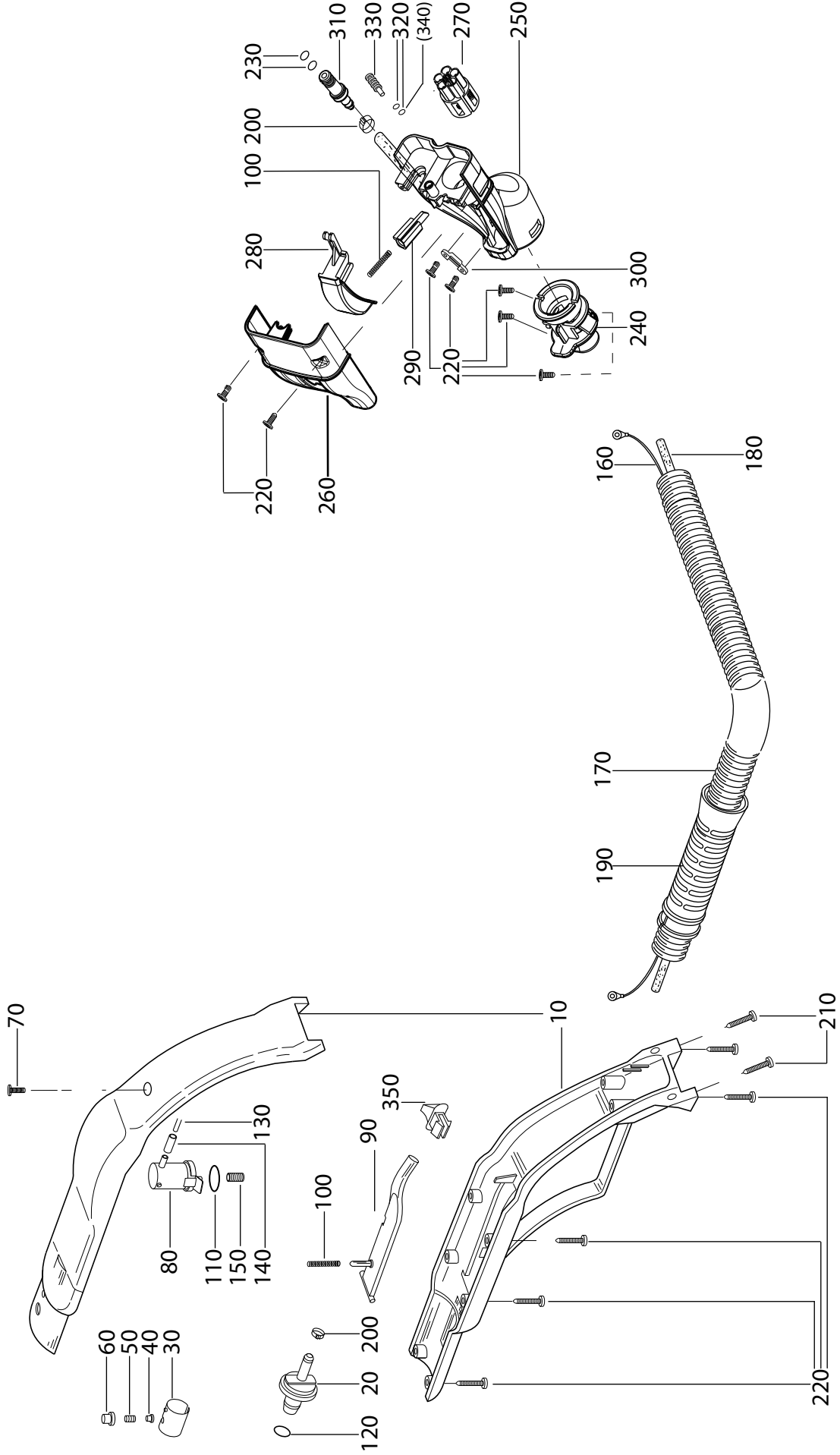


Tavola n°: **G0103**
 Data: **11/07/2007**